

Program inspection (name congress)

Rotterdam



**ROTTERDAM
PARTNERS**

Rotterdam Partners
Contactpersoon

 /LoveRotterdam
 @LoveRotterdam

 @rotterdam_info
#LoveRotterdam

www.rotterdampartners.nl

Site-inspection

21st of June 2018

08.30 – 08.45	Transfer	By taxi
08.45 – 09.45	Hilton Hotel	
09.45 – 10.00	Transfer	By foot
10.00 – 12.00	Postillion Convention Centre WTC	
12.00 – 12.15	Transfer	By foot
12.15 – 12.45	Laurenskerk	
12.45 – 13.05	Transfer	By taxi
13.05 – 14.05	Lunch at Hotel New York	
14.05 – 14.15	Transfer	By foot
14.15 – 14.45	Fenix Food Factory	
14.45 – 15.00	Transfer	By watertaxi
15.00 – 15.45	ss Rotterdam	
15.45 – 16.15	Coffee at ss Rotterdam	
16.15 – 16.45	Little cruise through the port of Rotterdam	By watertaxi
16.45 – 17.45	Mainport/Inntel Hotels	
17.45 – 18.15	Transfer	By foot
18.15	Diner at Hugh	

22nd of June 2018

09.15 – 09.30	Transfer	By taxi
09.30 – 10.15	Rotterdam Marriott Hotel	
10.15 – 10.30	Transfer	By foot
10.30 – 11.00	Urban Residences	
11.00 – 11.10	Transfer	By taxi
11.10 – 11.40	CityHub	
11.40 – 11.50	Transfer	By foot
11.50 – 12.10	King Kong Hostel	
12.10 – 12.20	Transfer	By taxi
12.20 – 13.20	Lunch at Mainport/Inntel Hotels	
13.20 – 14.20	Mainport/Inntel Hotels	
14.20 – 14.30	Transfer	By watertaxi
14.30 – 15.00	Euromast	
15.00 – 15.10	Transfer	By foot
15.10 – 15.40	Drinks at Parqiet	
15.40 – 16.20	Transfer via The Park	By foot & watertaxi
16.20	Arriving at Mainport/Inntel Hotels	

Thursday 21th of June



08.30 – 08.45

Transfer by taxi

08.45 – 09.45

Inspection at Hilton Hotel

09.45 – 10.00

Transfer by foot

The Rotterdam Hilton was completely renovated in 2013. It is in the Lijnbaankwartier district in the heart of the city's shopping area next to the Central District. It is a stone's throw away from the City Hall (Stadhuis) on the Coolingsel road and the Oude Luxor Theatre and the Doelen concert hall. Rotterdam's was the eighteenth Hilton outside the US. Its many German guests ensured that the building which was ready in 1964 had a buzzy, business feel (lots of concrete, glass and granite). The interior design featured a range of rich woods and marbles and striking glass mosaics. The hotel's original luxurious ambience was restored during the recent renovation.

The Green Key hotel has 254 spacious modern rooms. These include Executive Rooms with access to the Executive Lounge. Free Wi-Fi is available to hotel guests in all the hotel's public areas. The Stadshal Bar and Restaurant with its open kitchen visible to the clientele offers a range of brasserie-style dishes. It is open for breakfast, lunch and dinner. There are also seven meeting rooms which can hold from four to 325 people.

The hotel is seven minutes from Rotterdam Central Station by foot. The Hilton offers (limited) valet parking and there is a car park diagonally opposite the hotel.

Hilton Rotterdam
Weena 10
3012 CM ROTTERDAM
Contactpersoon
www.rotterdam.hilton.com

🐦 [@HiltonRotterdam](https://twitter.com/HiltonRotterdam)
📘 [/HiltonRotterdam](https://www.facebook.com/HiltonRotterdam)



10.00 – 12.00

Inspection at Postillion Convention Centre WTC

12.00 – 12.15

Transfer by foot



The Postillion Convention Centre WTC Rotterdam can accommodate fairs, national and international congresses, business events, meetings, receptions and dinners. It is located right in the city centre, in Beursplein square in the Laurenskwartier area. The present Postillion Convention Centre WTC Rotterdam site is not far from where the first Merchants' Exchange opened in 1598. It was the centre of Rotterdam trade for centuries. The present building was opened in 1941.

The oldest part of the Postillion Convention Centre WTC Rotterdam was constructed at the end of the 1930s. The building was designed by architect Jan Frederik Staal. He combined elements of the Amsterdam School and the 'Nieuwe Zakelijkheid' (new pragmatism) architectural styles. In 1973, his son, Arthur Staal, added an extra single-storey extension. A 97-metre-high green office block, designed by Rob van Erk and built between 1983 and 1986, towers above the exchange hall. It was at this time that Queen Beatrix gave the whole complex the name, Beurs-World Trade Center. The celebrated Mecanoo Architecten architectural practice was in charge of the restoration and renovation of the historic low-rise building. The emphasis here lies in the powerful combination of glass and steel.

Postillion Hotels has been the new owner of the Convention Centre since 1 April 2015. The Convention Centre has more than 37 different spaces that can accommodate groups of 5 to 1,000 people. It can accommodate even larger gatherings when the spaces are combined. The ceiling height in the largest space, the Rotterdam Hall, is 6.9 metres. When set up as a theatre, it can accommodate 1,000 people and, as a dining venue, 600. From the Town Hall space, on the 23rd floor of the office block, there is a magnificent view over the city. This room can hold up to 120 people in its theatre set-up and 100 when a dining venue.

The Postillion Convention Centre WTC Rotterdam is a Green Key venue and certified 5-Hammer Congress Company. Wi-Fi coverage can be purchased. In-house catering can provide congress lunches, buffet receptions and full dinners.

The Postillion Convention Centre WTC Rotterdam has its own car park in the building. More parking places are available in the nearby WTC-V&D car park. There are over 500 parking places in total. Organisers can hire parking space for their participants. The Convention Centre is also easily

accessible by public transport, with trams and metros stopping just outside.

Postillion Convention Centre WTC

Beursplein 37

3011 AA Rotterdam

Contactpersoon

www.wtcrotterdam.nl

🐦 [@WTCRotterdam](https://twitter.com/WTCRotterdam)

📘 [/WTCrotterdam](https://www.facebook.com/WTCrotterdam)



12.15 – 12.45

Laurenskerk

12.45 – 13.05

Transfer by taxi

The Laurenskerk, or Church of St. Lawrence, originally arose on the banks of the River Rotte, and its location can truly be called the very birthplace of Rotterdam. It is an imposing church built between 1449 and 1525, and it is Rotterdam's only surviving late Gothic building. After the bombing of Rotterdam in the Second World War, the image of the heavily damaged church and the reconstruction works that followed became a symbol of all that the city and its people had endured.

Today, the medieval Laurenskerk cuts a striking profile amid the bold modernity of the city's present-day architecture. The church has a pleasant, museum-like layout, and in addition to regular church services, concerts and tours, it frequently hosts conferences, fairs, dinners and other professional and ceremonial meetings. With a few simple pieces of equipment and lighting effects, the church can be transformed into a fairy-tale setting. Because there is no fixed seating, the Laurenskerk can be configured to suit the needs of groups of any size. In a theatre/concert configuration, the church can seat up to 1,200, or can host from 150 to up to 1,000 for dinner. The church has its own in-house catering facilities, but can also accommodate outside caterers.

The Laurenskerk has had its own patio cafe, de Swarte Leeuw (the Black Lion) since 2015. It is the perfect place for an afternoon drink on the Grotekerkplein in the summer months. The church has free Wifi, is Green Key certified and fully wheelchair accessible.

The Laurenskerk is approximately five minutes' walk from the train and metro station Blaak. The nearest parking garages, WTC-V&D and Markthal, are also just five minutes' walk.

Laurenskerk

Grotekerkplein 27

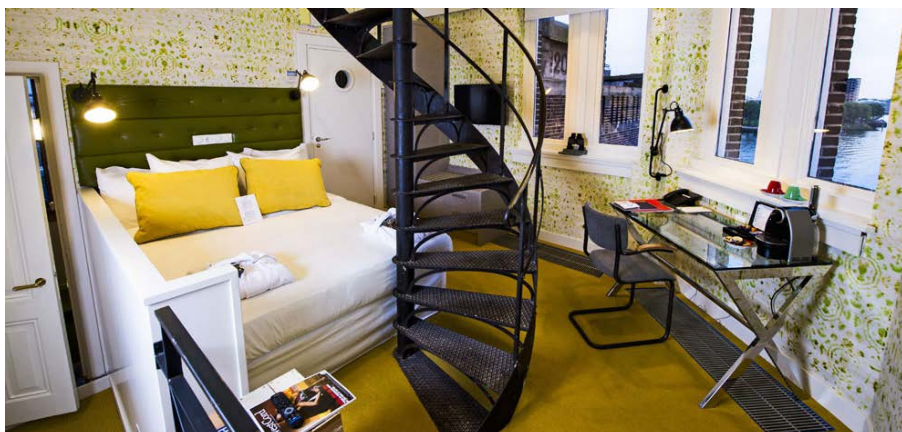
3011 GC ROTTERDAM

Contactpersoon

www.laurenskerkrotterdam.nl

🐦 [@Laurenskerk](https://twitter.com/Laurenskerk)

📘 [/Laurenskerk-Rotterdam](https://www.facebook.com/Laurenskerk-Rotterdam)



13.05 – 14.05

Lunch at Hotel New York

14.05 – 14.15

Transfer by foot

Hotel New York opened its doors in 1993. The building on the banks of the River Maas was formerly the Holland America Line head office. It dates from 1917 and is typical of the period. The building's air of nostalgia brings to mind the drama of Dutch immigrants setting sail from here to seek a new life in North America.

The hotel has 72 bedrooms, seven function rooms, two restaurants and free Wi-Fi. The largest room can hold up to 100 people when set up as a theatre. The restaurant's high ceilings, colourful lamps, robust pipes and pillars and shipping features give it a nautical, industrial ambience. Hotel New York has a policy of sustainability and a Green Key certificate.

The hotel is at the end of the Wilhelmina Pier in the Kop van Zuid district. There are a number of car parks and garages nearby. Wilhelminaplein metro station is about a 5-minute walk away and the hotel can also be accessed by water taxi. Hotel New York is part of the WestCord Hotels Group.

Hotel New York
Koninginnenhoofd 1
3072 AD ROTTERDAM

Contactpersoon

www.hotelnewyork.nl



14.15 – 14.45

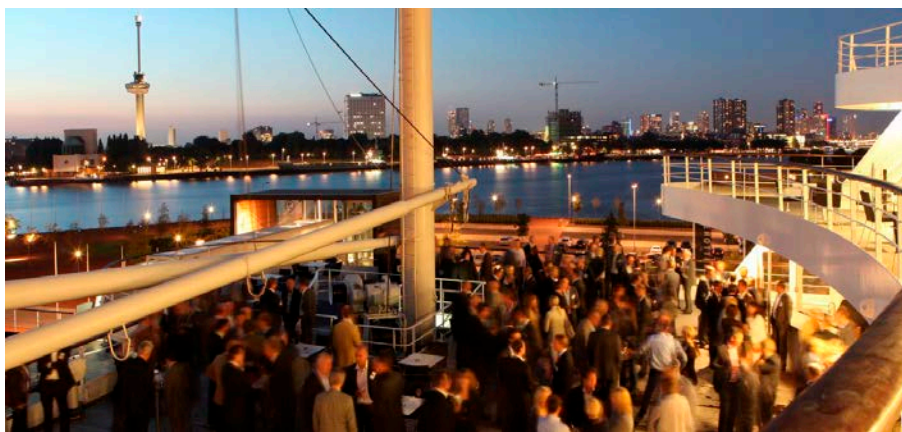
A walk through the Fenix Food Factory

14.45 – 15.00

Transfer by watertaxi



With a love for food and craft these entrepreneurs found each other in 2014 in the streets of Rotterdam. A passion was shared, a plan was made and a dream was realised in an old port warehouse on Katendrecht. Under the name Fenix Food Factory these entrepreneurs offer Rotterdam a culinary hotbed; a place to go shopping, learn how products are made and to experience craftsmanship. Closed on Mondays only! So time enough to come again!



15.00 – 16.15

Inspection at ss Rotterdam

The steamship Rotterdam is the largest ocean-going steamer ever built in the Netherlands. After its launch in 1959, it became the flagship of the Holland America Line and sailed to many parts of the world. The ship is now permanently moored in Rotterdam's Maashaven (Meuse Harbour) near Katendrecht.

The vessel's history can be felt everywhere on board. The 1950s interior and its many artworks were lovingly restored between 2005 and 2008. The hotel rooms, restaurants and other amenities have been thoroughly modernised and satisfy all of today's needs. The former cruiser has a four-star hotel, Two restaurants and two bars on board. The interior design has a 1950s feel and boasts original features.

There are 14 other 1950s-style rooms and 16 venues suitable for meetings. The largest of these is the Theatre which can be used to stage a congress with up to 500 participants when arranged as a theatre and up to 400 people when arranged for a dining event. It is possible to stage a congress for more than 2,000 participants by combining a number of on-board spaces. The Theatre has a ceiling height of eight metres and the space can be arranged in whatever way is required. The Theatre's balcony has its original seating arrangement. The Theatre stage measures approximately eight by five and a half metres and has a retractable theatre curtain.

The ss Rotterdam is easy to get to by both car and public transport. The journey by the number 77 bus from Rijnhaven metro station takes 10 minutes. There is a spacious (paid) car park on the quay.

ss Rotterdam
3e Katendrechtsehoofd 25
3072 AM Rotterdam
Contactpersoon
www.ssrotterdam.nl

🐦 [@de_rotterdam](https://twitter.com/de_rotterdam)
📘 [/ssrotterdam](https://www.facebook.com/ssrotterdam)



16.15 – 16.45

**Little cruise through the
port of Rotterdam**

16.45 – 17.45

Mainport Hotel

17.45 – 18.15

Transfer by foot



If you want to make a truly spectacular entrance, try arriving by water at 50kph in the Water taxi! And with 50 stops in metropolitan Rotterdam, sometimes it's actually the easiest way to get from point A to point B.

The Water taxi fleet has five eight-seater and five twelve-seater boats, all of them fast, with stops all over the city and a few just outside it (between Kinderdijk and Spijkenisse). Trips farther afield can be arranged by request. Prices are based on distance and group size.

Watertaxi Rotterdam
Koninginnenhoofd 7
3072 AD ROTTERDAM
www.watertaxirotterdam.nl

+31 (0)10 403 03 01
info@watertaxirotterdam.nl



18.15
Diner at Hugh

The place to meet for drinks and a bite to eat. All day every day! HUGH is a cocktail club situated in the Hilton Hotel in Rotterdam s city-centre, and is the perfect place to meet, eat, drink and socialize.

Friday 22nd of June



09.15 – 09.30

Transfer by taxi

09.30 – 10.15

Inspection at Rotterdam

Marriott Hotel

10.15 – 10.30

Transfer by foot

Directly opposite to the Rotterdam Central Station you will find the Rotterdam Marriott Hotel, that was fully renovated in 2016 and counts as one of Rotterdam's leading hotels. The hotel has 230 spacious rooms, of which many include a view on the city's skyline. Each room is equipped with state-of-art facilities and amenities, ranging from high speed internet and comfortable bedding to large marble bathrooms and a 42" flat-panel TV.

Besides, the Rotterdam Marriott Hotel is very suitable for meetings and conferences, due its direct connection to concert and conference hall "De Doelen ICC Rotterdam", via a pedestrian bridge. For this reason, Marriott is able to offer rooms for 100 to 3000 persons. Also, the Rotterdam Marriott Hotel itself has five boardrooms and 250 m2 of multifunctional meeting rooms. All of these are with daylight, high ceilings and high speed internet. The hotel also has a bar-restaurant in the lobby, that fits with every moment of the day.

The Rotterdam Marriott Hotel is very centrally located, directly opposite to the Rotterdam Central Station, with a travel time of 25 minutes only from Amsterdam Schiphol. For this reason, the hotel is very easy to reach both by train, metro, tram and bus. The large shopping and nightlife areas, museums and well-known attractions such as the Markthal and Euromast all are situated close to the hotel.

Rotterdam Marriott Hotel

Weena 686

3012 CN ROTTERDAM

Contactpersoon

www.marriottrotterdam.com

🐦 [@RdamMarriott](https://twitter.com/RdamMarriott)

📘 [/rotterdammarriott](https://facebook.com/rotterdammarriott)

📷 [@rdammarriott](https://instagram.com/rdammarriott)



10.30 – 11.00

Inspection at Urban Residences

11.00 – 11.15

Transfer by taxi

Urban Residences provides spacious and luxurious design apartments and studios in the B Tower, designed by the well-known architect Wiel Arets, situated on the junction of the Lijnbaan and the Beurstraverse (Koopgoot), right next to the Bijenkorf department store. The apartments and studios are available for rent for a temporary stay of at least 2 nights.

Both the apartments and the studios are available in three classes, each with its own level of comfort (apartment: deluxe, penthouse and economy; studios: economy, deluxe and superior). Urban Residence's hostess is happy to share her tips on how to make a stay in the city even more pleasant. Urban Residences brings together different types of design with an emphasis on luxury and functionality.

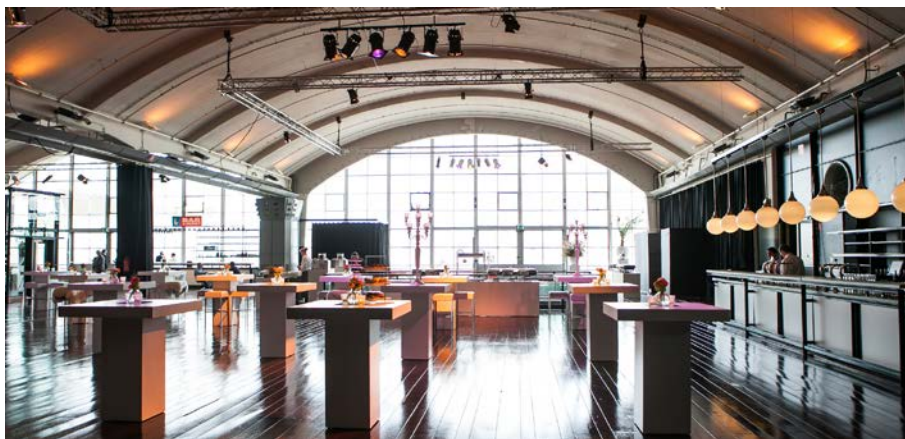
Urban Residences

Hennekijnstraat 104

3012 EB ROTTERDAM

Contactpersoon

www.urbanresidences.com



11:15 – 11:45

Inspection at Cruise Terminal Rotterdam

11.45 – 11.55

Transfer by foot

Rotterdam Cruise Terminal is on the Wilhelmina Pier in the Kop van Zuid district. The building was originally the arrivals and departures hall for the Holland America Line steam ships leaving on their transatlantic voyages in days gone by. Hundreds of thousands of immigrants left from here to travel to New York. Nowadays, international cruise ships drop anchor to moor along the quay.

The functional industrial architecture has been adapted to modern demands and the building has been used in recent decades as a venue for parties, congresses and fairs. It is a striking edifice featuring a row of large arched constructions and frontage of huge windows. The five available arched sections of the building can be rented individually making it possible to stage events for anything from 100 to 2,750 people. The ceiling height ranges from four to eight metres and the interior can be set up according to the requirements of the client.

The largest individual hall can hold a maximum of 1,000 when set up as a theatre and 850 when a dining area. The halls all have Wi-Fi coverage free of charge.

Catering at Rotterdam Cruise Terminal is provided by Ma Guise Catering and/or Maitre Frederic Supreme Catering. The two companies' differing styles supplement each other well.

Rotterdam Cruise Terminal is easily accessible by public transport: metro, bus and water taxi stops are at walking distance from the site. There is also sufficient (paid) car parking immediately around the building.

Cruise Terminal Rotterdam

Wilhelminakade 699

3072 AP ROTTERDAM

Contactpersoon

www.cruiseterminalrotterdam.nl

 [/cruiseterminalrotterdam](https://www.facebook.com/cruiseterminalrotterdam)



11.55 – 12:30

**Inspection at nhow
Rotterdam**

12.30 – 12.45

Transfer by watertaxi

The four-star nhow Rotterdam hotel is in the iconic De Rotterdam, a 'vertical city' designed by internationally celebrated architect Rem Koolhaas/OMA and which has views over the Maas river and the Erasmus Bridge. The hotel has a contemporary interior with clean lines and design furniture. Modern architecture and works by local artists give the place the feel of the city's character.

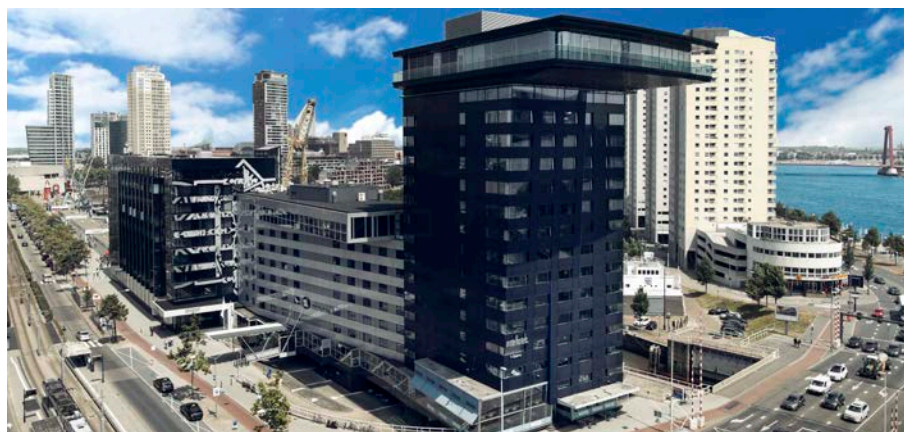
The hotel is on the Wilhelmina Pier in the Kop van Zuid district and is suitable for both business visitors and tourists. nhow Rotterdam was opened in 2014 and was the world's third nhow hotel after predecessors in Milan and Berlin.

nhow Rotterdam
Wilhelminakade 137
3072 AP ROTTERDAM
Contactpersoon
www.nhow-rotterdam.com

🐦 [@nhowrotterdam](https://twitter.com/nhowrotterdam)

📘 [/nhowrotterdam](https://facebook.com/nhowrotterdam)

📷 [@nhowrotterdam](https://instagram.com/nhowrotterdam)



12.30 – 13.30

**Lunch at Mainport Hotel /
Intel Hotels**

13.30 – 14.30

**Inspection at Mainport
Rotterdam / Intel Hotels**

14.30 – 14.40

Transfer by watertaxi

This luxurious 4-star design hotel is located in a unique spot in the centre of Rotterdam and at the foot of the Erasmus bridge. The rooms have all the amenities you need for a comfortable stay. The names of the room types tell you exactly which fantastic view you can expect: the Rotterdam skyline, views of the city or a panoramic view of the Maas river and the Erasmus bridge.

From almost every window of Intel Hotels Rotterdam Centre you have a splendid view of the Maas river. The different characteristics of the surrounding water have been used in the decoration of the hotel. Water flows, water refreshes and water relaxes.

Intel Hotels Rotterdam Centre is the perfect starting point for your visit to Rotterdam. The main tourist attractions, shops and nightlife are within walking distance. The hotel is easily accessible by car or public transport.

Intel Hotels has respect for people and the environment, and contributes to a healthy planet and beautiful society. With the Surprisingly Sustainable program, the hotel group is working towards a sustainable future.

Intel Hotels Rotterdam Centre

Leuvehaven 80

3011 EA ROTTERDAM

Contactpersoon

www.innethotels.com

🐦 [@ innethotterdam/](https://twitter.com/innethotterdam/)

📘 [/InnethRotterdam/](https://www.facebook.com/InnethRotterdam/)

📷 [@innethotelsrotterdamcentre/](https://www.instagram.com/innethotelsrotterdamcentre/)



14.40 – 15.10

Euromast

15.10 – 15.20

Transfer by foot

15.20 – 15.50

Drinks at Parqiet

15.50 – 16.30

Transfer by foot & watertaxi

16.30

Arriving at Mainport

Rotterdam

The Euromast observation tower, designed by Rotterdam architect H.A. Maaskant, was constructed in 1960 to mark the second Floriade gardening extravaganza which was being held in Rotterdam. At the time, the Euromast was 100 metres high. In 1970, the Space Tower was added, raising the tower to a height of no less than 185 metres. This made the Euromast Rotterdam's highest building.

The Euromast lift takes just 30 seconds to whisk visitors to a height of 100 metres, where there is an observation deck and brasserie restaurant. There is a 360° view over Rotterdam and its surroundings. The Euroscope revolving lift takes people to a height of 185 metres. A guide is on hand during holidays and weekends. Euromast is Europe's only attraction from which you can abseil to the ground. Of course, this only takes place under the guidance of a professional.

The brasserie is open from 11:00 a.m. for lunch, afternoon tea, afternoon wine and dinner. Brunch is served from 10:00 a.m. on Sundays. The Deli, a pleasant child-friendly self-service restaurant with lots of sweet treats on offer, is on the ground floor. Groups of more than 12 people are welcome but a reservation must be made.

The Euromast is in the city's Scheepvaartkwartier district. From Rotterdam Central Station, take tram 8. It can also be reached by water taxi. Paid parking is available for cars and buses can park free at the designated parking places.

Euromast
Parkhaven 20
3016 GM ROTTERDAM
Contactpersoon
www.euromast.nl

🐦 [@euromast010](https://twitter.com/euromast010)

📘 [/euromast010](https://www.facebook.com/euromast010)

📷 [@euromast010](https://www.instagram.com/euromast010)

*Rotterdam Partners
Korte Hoogstraat 31
3011 GK Rotterdam*

Contactpersoon RP

www.rotterdampartners.nl

**ROTTERdam
partners**